



hamlyn  
smith

Brunswick Place, Hove, BN3 1ND

£2,150 Per month



# hamlyn smith.

 2 Bedrooms

 1 Reception

 1 Bathroom

A stunning two-bedroom first floor apartment situated on Brunswick Place in Hove.

- Two Bedroom Apartment
- First Floor
- Front Balcony With Sea Views
- Energy Rating - D
- Council Tax Band - C
- Parking Zone - M
- Rear West Facing Roof Terrace
- Moments From Shops & Restaurants
- Furnished









# hamlyn smith.

📍 50 Goldstone Villas, Hove, BN3 3RS

☎ 01273 762222

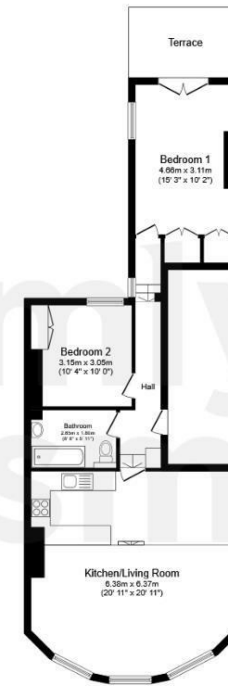
✉ hello@hamlynsmith.co.uk

Upon entering, you are greeted by an immediate smart and sophisticated feel. The inviting minimalist yet spacious open plan living/kitchen area is the heart of the home. Bathed in natural light streaming through large original sash windows. These windows not only flood the space with light but also offer access to a charming terrace.

The stylish kitchen boasts ample storage and integrated appliances. Adjacent to the kitchen is a versatile dining area that could easily double as a home office, providing flexibility to suit your lifestyle needs. Descend a few steps to the main living space, where you'll find ample room to relax and entertain. Whether you're unwinding after a long day or hosting a gathering, the expansive floor space offers endless possibilities.

Both bedrooms are presented immaculately, with the principal bedroom benefiting from a west-facing terrace, ideal for soaking in the sun and enjoying summer evenings. The bathroom, consistent with the rest of the apartment, exudes modern luxury and has been finished to a high standard.

Conveniently located with Western Road at your doorstep and an array of cafes and restaurants nearby, Brunswick Place offers the epitome of Hove's vibrant city living. Step outside, and you'll catch glimpses of the sea, adding to the allure of this exceptional property.



**First Floor**  
Floor area 76.8 sq.m. (827 sq.ft.)

**Total floor area: 76.8 sq.m. (827 sq.ft.)**

This floor plan is for illustrative purposes only. It is not drawn to scale. Any measurements, floor areas (including any total floor area), openings and orientations are approximate. No details are guaranteed, they cannot be relied upon for any purpose and do not form any part of any agreement. No liability is taken for any error, omission or misstatement. A party must rely upon its own inspection(s). Powered by [www.Propertybox.io](http://www.Propertybox.io)

